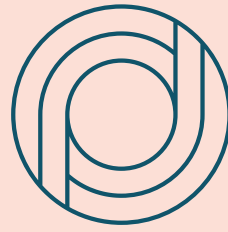


BUNGALOW 8



THE LOFT



## Bungalow 8 & The Loft

Escape to the sanctuary of Bungalow 8, the perfect place to take a break from the fast paced Sydneysider lifestyle.

With picturesque views of King Street Wharf and Darling Harbour, Bungalow 8 is the perfect venue for any occasion whether it be an intimate dinner or large-scale cocktail party.

Alternatively if you're looking for the total VIP experience with wow-factor, head upstairs to The Loft. Sections of the balcony can be hired exclusively for any occasion. The stunning views of Darling Harbour will set the scene for a truly memorable occasion.

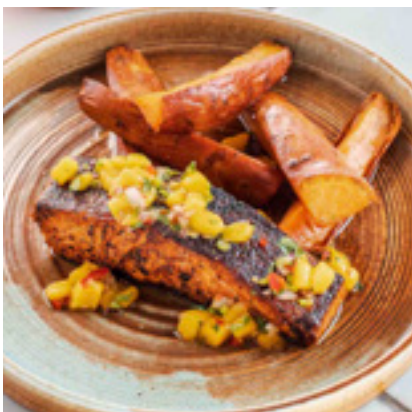
3 Lime Street, King St Wharf NSW 2000

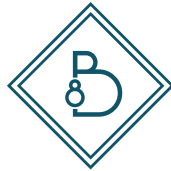
02 8322 2006 | [info@bungalow8sydney.com.au](mailto:info@bungalow8sydney.com.au) | [bungalow8sydney.com.au](http://bungalow8sydney.com.au)



#bungalow8sydney

#theloftsydney





BUNGALOW 8

## TERRACE SECTIONS

Cocktail Up to 600

Escape the hustle and bustle of the city on our sun-drenched terraces, these spaces are perfect for intimate casual dining get-togethers and standing cocktail events.



## VENUE EXCLUSIVE

Cocktail Up to 1200

Take your guests on an escape to the waterfront sanctuary that is Bungalow 8. With a mix of both indoor and outdoor space and direct access to King St Wharf and Barangaroo, your guests will have exclusive use of one of Sydney's most sought-after cocktail party venues.



THE LOFT

## VENUE EXCLUSIVE

Standing Capacity 450

This flexible space provides iconic uninterrupted views across Darling Harbour! Get the best of both areas! The large cocktail bar lights up as the night progresses. This sizable bar can be easily accessible from all areas of the room. Enable your guests the ability to roam freely and rest on our comfy couches or high-tops insides or outside with the seaside views.



## BALCONY SPACE

Standing Capacity 50

This fully covered balcony provides uninterrupted views over Iconic Darling Harbour. Spanning across the entire first floor there is plenty of room for your guests to relax regardless of the season.

## NORTHERN TERRACE

Standing Capacity 100

One of our larger spaces in the loft, this space is perfect for standing cocktail style social and corporate events.



## TERRACE LOUNGE / SOUTHERN TERRACE

Standing Capacity 180

This semi-private space is the perfect blend of indoor and outdoor spaces – used for cocktail style events.





# CANAPÉ MENU

*Please select a package below. A minimum order of 20 is required:*

7 Piece Package | \$40pp

*Selection of 3 cold, 4 hot options*

9 Piece Package | \$50pp

*Selection of 4 cold, 4 hot, 1 substantial*

11 Piece Package | \$60pp

*Selection of 4 cold, 4 hot, 2 substantial, 1 dessert*

## COLD CANAPÉS

Mini insalata caprese skewer (v, gf)

Freshly shucked oyster, lime cured apple salsa (gf, df)

Inside out nori roll, pickled ginger, wasabi (salmon, tuna or veg)

Smoked salmon roulade with avocado mousse

Shiitake & tofu rice paper rolls, lime chilli dressing (ve, gf, df)

Prosciutto & rockmelon pops, spicy pickled chillies (gf, df)

## HOT CANAPÉS

Tempura prawn skewers, sweet chilli dipping sauce (gf)

Pumpkin & feta arancini, harissa mayo (v)

House made satay chicken skewer (gf)

Salt & pepper calamari, chilli-yuzu mayo

Pork & fennel sausage roll

Steamed silken tofu, black bean sauce, cashews & shallots (ve, gf)

Mini beef corndog, Japanese BBQ sauce, Kewpie, bonito flakes

*\*All menus are subject to seasonal change and availability*

## SUBSTANTIALS

Crispy pork belly bao bun, slaw, crushed peanuts

Karaage chicken bao bun, herb salad & sriracha mayo

Pulled Jackfruit slider, red cabbage relish, smokey BBQ sauce (v)

Fish & chips, tartare sauce\*

Spicy beef meatball slider, rich tomato sauce, pecorino & pickled chillies\*

## SOMETHING SWEET

Mini lemon meringue tartlet (v)

Macadamia & white chocolate brownie (v)

Raw caramel slice (ve, gf)

*To add additional canapés to your package:*

Cold - \$6 per piece

Hot - \$7 per piece

Substantial - \$8.5 per piece

Something Sweet - \$5 per piece

*\*All menus are subject to seasonal change and availability.*

*Please speak to your functions manager to find out what options are available.*

# GRAZING STATIONS

*Our grazing stations are designed to be the perfect addition to your selected canape package.*

*A minimum order of 75 is required:*

## **CHEESE & CHARCUTERIE STATION | \$25pp**

*Selection of sliced cold cuts; prosciutto, bresaola, mortadella, salami,  
Selection of cheese; brie, blue cheese, goat's cheese with olive oil and lemon  
Pickles, beetroot relish, sourdough, crisp bread*

## **CHICKEN CARVERY STATION | \$20pp**

*Whole chicken sliced and served by our Chef  
Bread rolls, green salad, pickles and condiments*

## **BEEF CARVERY STATION | \$20pp**

*Slow roasted Wagyu brisket sliced and served by our Chef  
Bread rolls, green salad, pickles and condiments*

## **SEAFOOD STATION | \$25pp**

*Sliced smoked salmon, prawns and shucked oysters  
Fresh bread, cocktail sauce, lemon and condiments*

## **PAELLA STATION | \$20pp**

*Saffron rice with chorizo, seafood, onion and  
Grilled capsicum served by our chef*

## **TACO STATION | \$25pp**

*Wagyu brisket, Achiote chicken, Spicy quinoa mince with a selection  
of corn and flour tortillas, salads, salsas and hot sauces*

## **DESSERT STATION | \$15pp**

*Selection of cakes, pastries, fruit & sweets*

*\*All menus are subject to seasonal change and availability*



# BEVERAGE OPTIONS

*Minimum order of 20 is required*

	STANDARD	PREMIUM	DELUXE
2 HOURS	\$39	\$49	\$59
3 HOURS	\$49	\$59	\$69
4 HOURS	\$59	\$69	\$79

## STANDARD

*Draught Beer* — Furphy Refreshing Ale

*Bottled Beer* — Boag's Premium Light

*Sparkling* — Edge of the World Sparkling

*White Wine* — Edge of the World Sauvignon Blanc

*Red Wine* — Edge of the World Shiraz Cabernet

*Non-Alcoholic* — Juice and soft drink

## PREMIUM

*Draught Beer* — Furphy Refreshing Ale, Hahn Super Dry & Tooheys New

*Bottled Beer* — Hawthorn Pilsner & Boag's Premium Light

*Cider* — 5 Seeds Cider

*Sparkling* — Aurelia Prosecco

*White Wine* — 821 South Sauvignon Blanc & Circa 1858 Chardonnay

*Red Wine* — T'Gallant Juliet Pinot Noir & Wandering Duck Shiraz

*Rosé* — St Hubert 'The Stag' Rosé

*Non-Alcoholic* — Juice and soft drink

## DELUXE

*Draught Beer* — All Tap Beer & Cider

*Bottled Beer* — Boags Premium Light, Hawthorn Pilsner & Corona

*Sparkling* — Madame Coco Brut NV

*White Wine* — Pikorua Marlborough Sauvignon Blanc,

Il Villagio Organic Pinot Grigio DOC, California Dreamin' Chardonnay

*Red Wine* — Guilty by Association Pinot Noir & Pepperjack Shiraz

*Rosé* — Marquis de Pennautier Rosé

*Non-Alcoholic* — Juice and soft drink

*Please note our packages are subject to seasonal change.*

*\*A maximum of 3 hour beverage package is available for hens groups.*



## SPIRITS

Add a range of spirits to your beverage package for an additional \$10pp.  
Available only on Premium and Deluxe packages.

### ARRIVAL COCKTAILS - \$10 PER COCKTAIL

- Aperol Spritz - Aperol, prosecco, soda, orange*
- Italian Job - Gin, pink grapefruit, pomegranate, sparkling wine*
- Charlie Chaplin - Slow gin, apricot brandy, lime*
- Espresso Martini - Vodka, coffee liquor, espresso*
- Tasman Iced Tea - Vodka, Pimms, apple, lemon, raspberry, spices*
- Tommy's Margarita - Tequila, lime, agave syrup*

### ADD SELECTED BEER AND ROSE TO ANY BEVERAGE PACKAGE FOR \$5PP

### ADD BUBBLES - \$79 PER BOTTLE OR \$120 FOR MAGNUM

Treat your guests to champagne on arrival.  
Please speak with your event coordinator for their information.

### ON-CONSUMPTION BAR TAB

A bar tab can be set up for the duration of your event with your preferred selection of beverages and specified limit. Our staff will keep you informed of the balance throughout the event.

## CONTACT US

For any enquiries please contact our lovely events team on (02) 8322 2006 or submit an enquiry via our email [info@ausvenueco.com.au](mailto:info@ausvenueco.com.au)

## LOCATION

Bungalow 8 and The Loft are in prime positions on King Street Wharf, centrally located with Wynyard Train Station and the Barangaroo Ferry Wharf less than a 3 minute walk away. The Loft sits above Bungalow 8, both offering direct views over the harbour.

## AUDIO VISUAL

Any additional AV can be organised and approved with your event manager.

## STYLING & DÉCOR

Your event manager is happy to assist with all your event styling needs. Please speak with them directly to obtain quotes for floral and any additional touches for your event.

## ENTERTAINMENT

Bring the vibes to your exclusive event and let us organise your entertainment:

**DJ + Equipment** — \$150 p/hr, minimum 3 hours

### Live Music Acts —

Solo Act Rate \$730 (3 hours)

Duo Act Rate \$1330 (3 hours)

Trio Act Rate \$1995 (3 hours)

**Photobooth** — \$1200 for 4 hours

## HOST/SECURITY

Should you require a door host or additional security at your event, we can arrange this for you at a charge of \$50 per host/guard per hour.

Bungalow 8 & The Loft  
3 Lime Street, King St Wharf NSW 2000

02 8322 2006 | [info@ausvenueco.com.au](mailto:info@ausvenueco.com.au) | [bungalow8sydney.com.au](http://bungalow8sydney.com.au)



#bungalow8sydney

#theloftsydney